

# ESG

## Electronic Speed Governor

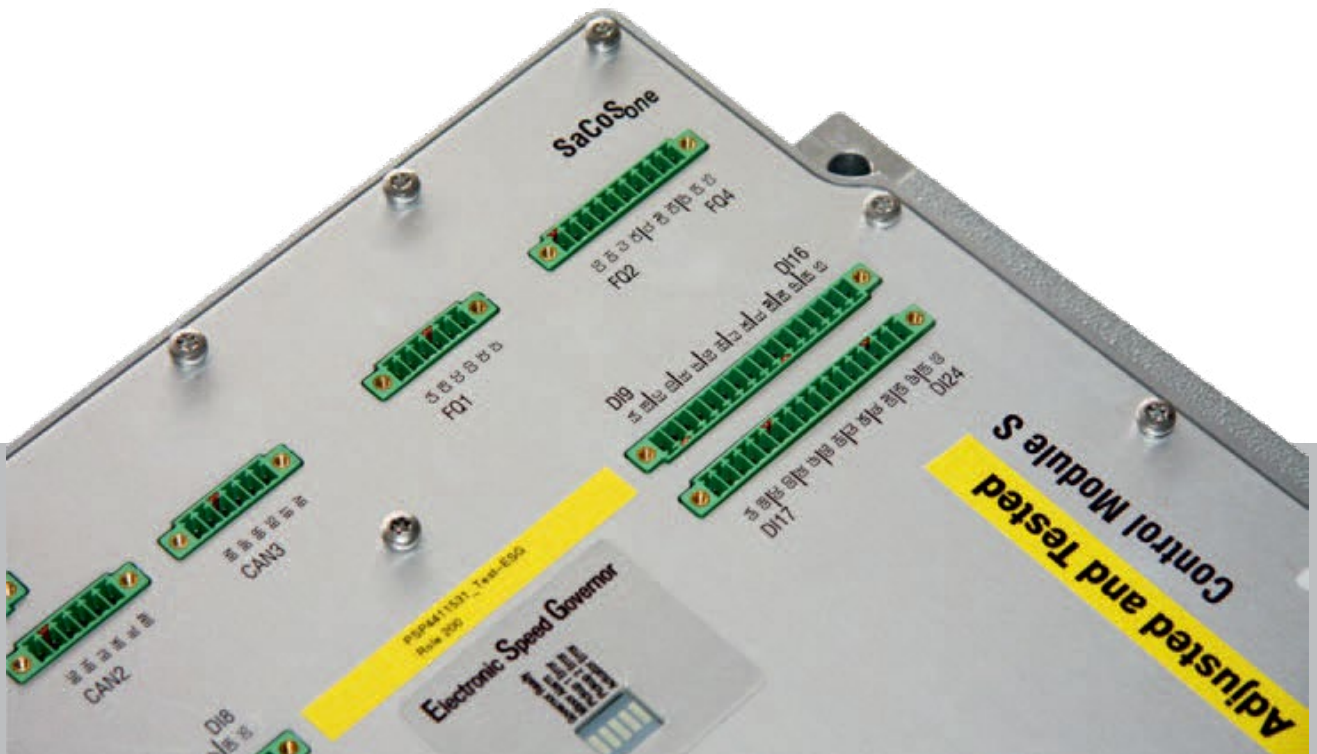
**Multiply safely  
the performances  
of your engine.**

### Description

It's the MAN Energy Solution's retrofit solution for the engine speed controlling. This high efficient speed governor is based on a 32-bit microprocessor. The maintainability and spare parts supplying are secured.

### Engines

The system is designed for all 4-stroke engines and S.E.M.T. Pielstick engine types.



# ESG

## Electronic Speed Governor

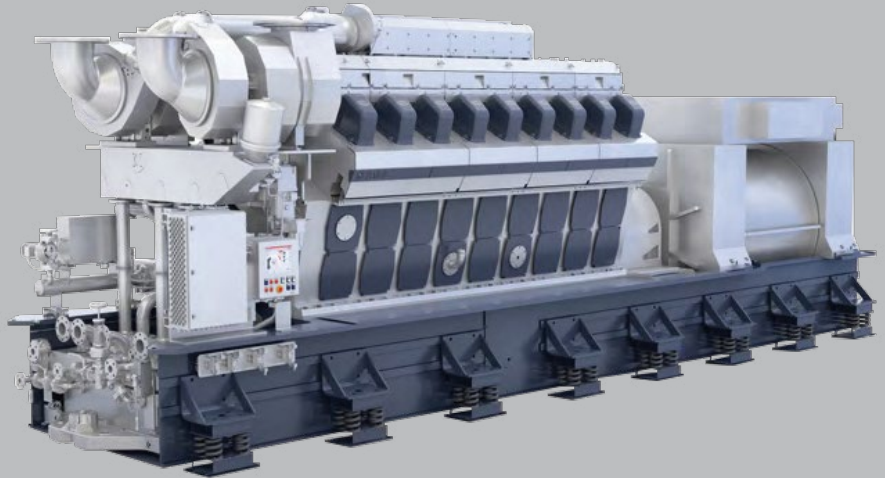
### Benefits

ESG offers a wealth of advantages compared to older speed governors:

- Better start behavior
- Improved soot performance
- Integration in the engine control
- Reliability, availability, maintenance

### Certified Quality

- Unitary and operation engine tests
- CE compliance and approval societies of classification
- MAN Energy Solutions OEM Products



### Features

- Limitation of starting fuel for optimized start-up phase with a minimum of smoke
- Fuel limitation depending on speed, load, charge air pressure
- Various speed setpoint source (analogue, digital, via PC)
- PID controlled governor with 3 configurable dynamics
- Monitoring of module and actuator output
- Load Sharing Operation

### Technical specifications

- 2 different actuator outputs
- 12 analogue inputs
- 2 analogue outputs
- 24 digital inputs
- 8 digital outputs
- 8 power outputs
- 24 PT1000 temperature inputs
- 4 frequency inputs
- For master / slave communication a CAN interface is implemented

### How to match ESG with your Automation Control System?

- Replacement of old electronic governors like Woodward 507, 237, 701, 721, EG-A, EG-M, 2301, Heinzmann, Barber-Colman, Neyrpic by latest digital control ESG (Electronic Speed Governor)
- Complete "speed governor retrofit system" with digital control system and customized software package
- Replacement of mechanical governors on engine like UG, PGA, PGG, H20, H25 by Electric Governor ESG

### MAN Energy Solutions France

Avenue de Chatonay  
Porte 7 - BP 427  
44615 Saint-Nazaire  
Cedex - France  
P +33 2 40 90 65 00  
F +33 2 40 90 65 89  
[www.france.man-es.com](http://www.france.man-es.com)